



**CALL FOR PROJECTS FOR THE NINTH CYCLE OF THE  
TransNet ENVIRONMENTAL MITIGATION PROGRAM  
LAND MANAGEMENT GRANT PROGRAM  
SPECIES AND HABITAT RECOVERY GRANT APPLICATION FORM**

Grant Application Form and required supplementary materials (hereafter referred to as "proposal") cannot exceed 12 pages.

Applicant Name<sup>1</sup>: Zoological Society of San Diego d/b/a San Diego Zoo Global (SDZG)

Address: 15600 San Pasqual Valley Rd., Escondido, CA 92027

Phone and Email Address: Sarah McCullough Hennessy [shennessy@sandiegozoo.org](mailto:shennessy@sandiegozoo.org) (760)291-5497\_

Name of Property: Rancho Jamul Ecological Reserve

General Location: South of Jamul, San Diego County

Jurisdiction: MU<sub>3</sub>

Total Acres: 54

Estimated Acres Requiring Management: 54

Owner(s) of Property<sup>2</sup>: California Department of Fish and Wildlife

Land manager(s) of property (include name[s]): Tracie Nelson

**Brief Project Summary that includes your primary goal and objectives (200-word maximum)**

Western burrowing owls (BUOW) are currently facing an uncertain future in San Diego County (Lincer and Bloom 2007). Once widespread throughout grasslands in the county, the BUOW population has been reduced to a single breeding node in the Otay Mesa region. Continued threats, including impending development, invasive vegetation, burrow loss, and low population growth rates, place the population in serious risk of extirpation. The foundation of a coordinated recovery strategy has been laid through seven years of scientific research, adaptive management, and interagency input. The goal of this proposal is to strategically support implementation and success of the strategy in coordination with critical recovery projects slated to begin in early 2018. Building on ICR's past adaptive management research program, we propose to support the establishment of a new breeding node at Rancho Jamul Ecological Reserve (RJER) with supplemental releases of BUOW from an existing conservation breeding program. By supporting node establishment, this project will further the goals and objectives of the Management and Monitoring Strategic Plan Roadmap (SDMMP 2017) and the BUOW Conservation and Management Plan (ICR 2017), and will have a significant positive impact on BUOW conservation in the region.

<sup>1</sup> While collaboration is encouraged in the development of the grant proposal, the proposal must identify one organization as the lead entity that will enter into an Agreement with SANDAG.

<sup>2</sup> If the applicant is not the landowner, please submit a letter or right-of-entry permit from the land owner granting permission to perform the land management duties as outlined in the proposal. Failure to provide the letter or right-of-entry permit will lead to disqualification of the proposal. **Attached letter or right-of-entry permit (if applicable) does not count towards 12-page maximum.**

**Quantify Expected Results** (add bullets as necessary)

- Augmentation of burrowing owl numbers in San Diego County through the use of conservation breeding and release
- Help ensure BUOW persistence at RJER to establish the first additional BUOW breeding node in San Diego County

**Brief Description of dedicated staff and/or consultants that would work on Project** (200-word maximum)

Dr. Lisa Nordstrom (Co-PI) has considerable experience managing large conservation management programs and has provided oversight for SDZG Institute for Conservation Research (ICR) BUOW adaptive management program for the last 7 years.

Dr. Sarah Hennessy (Co-PI, Project Manager) conducted her Ph.D. research on habitat requirements and selection by BUOW in San Diego grasslands and has been involved with the ICR BUOW program since its inception.

Colleen Wisinski (Project Specialist), holds a USGS BBL Master Banding permit for BUOW capture, banding, bleeding, and backpack telemetry.

Michael Mace (Conservation Breeding), SDZG Director of Animal Collections and Strategy, is highly experienced at managing/breeding endangered avian species. He has been involved with several successful conservation breeding programs, including California condor and Ridgway's rail.

Lindsay Bradshaw (LCDC Animal Care Manager) has over 15 years of experience in wildlife and environmental education with a specialty in advanced avian care.

Beth Sabiston (LCDC Animal Care Coordinator) has over seven years of experience in animal husbandry, enrichment, and interpretation with specialties in avian and terrestrial species.

Husbandry staff will assist with the care and breeding of BUOW at the Safari Park.

Seasonal ICR field technicians will assist with site preparation and translocation tasks.

### Funding Needs Summary

Please indicate how much funding is being requested from SANDAG and any matching funding proposed.

Budget Item	Requested Funding Amount	Proposed Matching Funds*	Description
Personnel Expenses Staff	<b>\$23,182</b>	<b>\$0</b>	Includes staff time for non-administrative work on the project
Personnel Administrative Expenses	<b>\$4,500</b>	<b>\$3,000</b>	Includes all staff time to administer the contract
Consultant Expenses	<b>\$22,500</b>	<b>\$0</b>	Includes all costs for consultant services
Other Direct Expenses	<b>\$22,500</b>	<b>\$0</b>	Includes all equipment, supplies, mileage, etc.
Indirect Costs <sup>3</sup>	<b>\$10,903</b>	<b>\$29,007</b>	All indirect charges (e.g., overhead) on the project, if any.
<b>Totals</b>	<b>\$83,584</b>	<b>\$32,007</b>	

\*if applicable

<sup>3</sup> Indirect Costs are only allowable if: (1) applicant has an indirect cost allocation plan audit approved by a qualified independent auditor or (2) the applicant's proposed method for allocating indirect costs is submitted with the proposal in accordance with [OMB guidelines](#) and approved by SANDAG. Indirect costs will not be reimbursed until one of the two conditions above are satisfied and indirect cost allocation plans must be

Are there matching funds available?  Yes  No

**If yes, how are the matching funds assured (100-word maximum)?**

Our current negotiated federal indirect cost rate is 54.91%. Zoological Society of San Diego has agreed to accept a lower indirect rate for this grant agreement and has provided the remainder as a match.

*Attach a letter from the organization/partner that ONLY provides confirmation that they are committed to providing the matching funds proposed for this project. Letters confirming matching funds will not count toward the 12-page limit. (General letters of support not related to commitment of matching funds will NOT be accepted and will NOT be considered as part of the proposal).*

**PROJECT PROPOSAL**

**A. Project Purpose**

- 1. Describe the proposed management activity(ies) and how it relates to the Management Strategic Plan (MSP) for Conserved Lands in Western San Diego County.**

This proposal addresses the MSP goals and objectives for western burrowing owls (*Athene cunicularia*, BUOW). The 2013 Management Strategic Plan (MSP) and the updated Management and Monitoring Strategic Plan Roadmap (MSP Roadmap; SDMMP 2017) set a regional goal to “increase the abundance of nesting burrowing owls to ensure that there are multiple interbreeding self-sustaining nodes... on Conserved Lands that will provide for BUOW persistence in the MSPA over the long-term (>100 years).”

The BUOW Conservation and Management Plan (BUOW Plan) for San Diego County (finalized in 2017) recommends the development of a short- to medium-term conservation breeding program, due to the insufficient numbers of birds available for building new breeding nodes solely through translocation from development projects. Wild individuals are also not likely to establish new breeding areas through natural dispersal and settlement because existing population density is too low. A local conservation breeding program is the best option for meeting the species goals set out in the MSP Roadmap. ICR initiated a conservation breeding program at the Safari Park in 2017, with approval from the wildlife agencies, and has enrolled one pair plus one unpaired male owl to date (with leads on additional candidate BUOW).

However, funding for this effort remains uncertain. Without continued support, supplemental owls to establish new breeding nodes will be unavailable. Funding from EMP would bridge the gap and enable the conservation breeding program to continue. With funding, additional owls will be enrolled up to program capacity, maintaining genetic integrity and increasing program output.

The immediate need for conservation breeding is to ensure persistence once the new node is established at RJER. The Burrowing Owl Habitat Management Area (BOHMA) is a 54-acre site within RJER that is actively managed for burrowing owls. Extensive site preparations by CDFW have included regular vegetation management (grazing and mowing) which has shifted the site from clear dominance of dense and tall non-native annual grasses to a shorter, sparser mix of grasses and native forbs. There are currently 25 maintained artificial burrows available. Since 2015, the habitat has been further enhanced for BUOW by experimental cover placement (brush piles) to encourage California ground squirrels to

---

renewed annually. The indirect cost methodology (if applicable) included with the application does not count toward the 12-page maximum.

colonize previously uninhabited areas of the BOHMA. In Fall 2017, 165 natural squirrel burrows were detected across the BOHMA (ICR 2017). Rapid assessments in 2016-2017 also indicated that relative to other sites in San Diego County, the BOHMA is the furthest along in terms of management and habitat condition (ICR 2017).

Initial establishment will be accomplished with active translocation of 5 wild BUOW pairs in early 2018 by ICR with support from the Metropolitan Airpark Project (MAP). Once the initial translocation is conducted using best practices, ICR and CDFW will conduct five years of follow-up monitoring and management including vegetation management, supplemental feeding and/or predator deterrence to minimize mortality and dispersal. In nearly all cases, projects to establish new populations benefit from supplemental translocations, which support the population through initial population losses. Maintaining a minimum group size also uses the semi-colonial life strategy of this species to improve the odds that each subsequent year's fledglings will choose to settle at RJER rather than dispersing. Through the use of supplemental translocations from ICR's breeding program, we can help ensure population persistence and establishment.

All study reports and data arising from ICR's previous research have been provided to SDMMP and can be found on the Project page (SDMMP 2017).

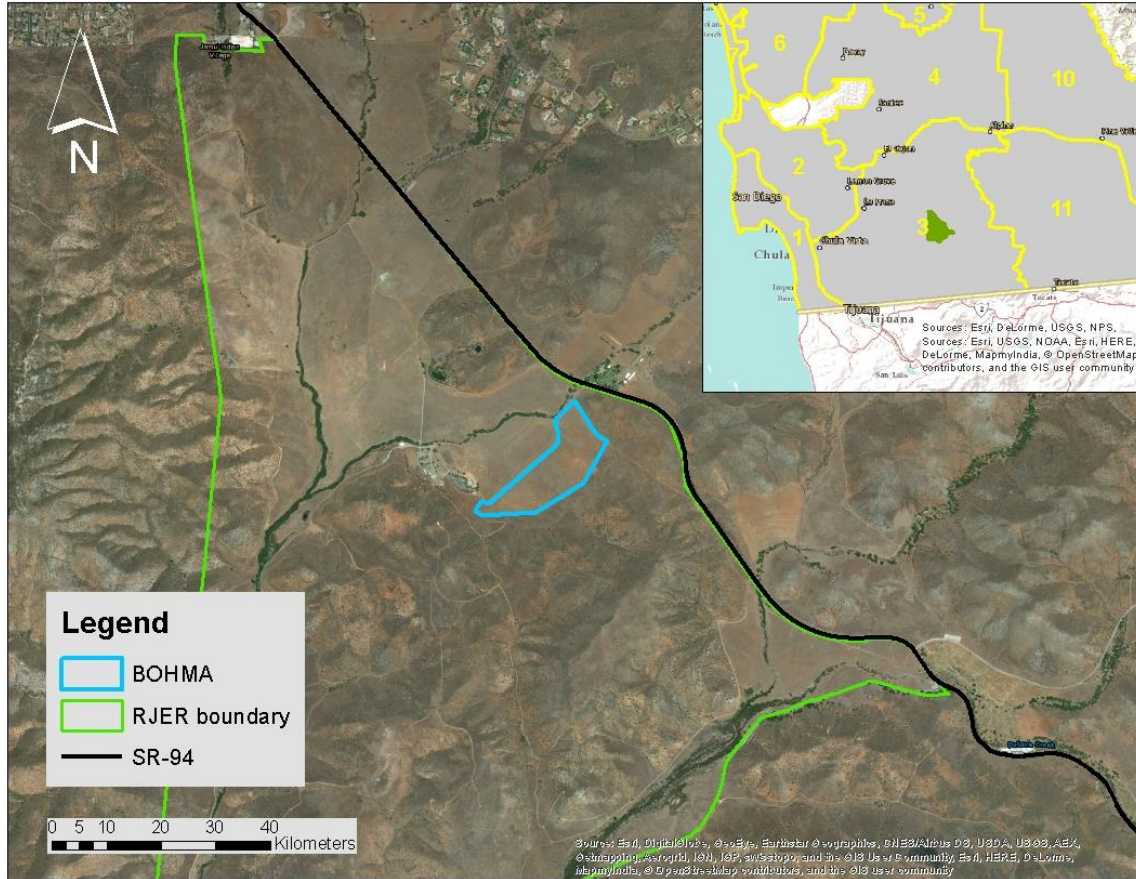
2. **Which MSP species and their habitats will benefit from the proposed management activity? Which specific MSP objective(s) and action(s) will be implemented?**

These management activities will benefit western burrowing owl (*Athene cunicularia*), a SL species under the MSP. A category SL species is defined as a "species whose persistence in the MSPA is at high risk of loss without immediate management action above and beyond that of daily maintenance activities" (SDMMP 2017). The proposed activities will specifically fulfill a priority objective for the 9th LMG Cycle, ATHCUN-6, which is to implement the species management plan for burrowing owl.

These activities will benefit BUOW in the new breeding node at RJER, in MU<sub>3</sub>, as well as help increase and promote stability for the entire population in San Diego County. Overwintering owls are detected nearly every year at RJER, but they have not yet remained for the breeding season. The stable presence of conspecifics could also potentially encourage overwintering owls to stay and breed, further increasing the BUOW population and lowering the risk of extirpation in this region.

3. **To be eligible for funding, the proposed project must be within the MSP area. In which Management Unit is the project located? (Attach a map)**

BUOW conservation breeding will take place at the San Diego Zoo Safari Park and Living Coast Discovery Center. Owl releases and other management activities will occur within MU<sub>3</sub>, at Rancho Jamul Ecological Reserve. Additional releases may occur at other priority node areas as identified by the interagency BUOW Partners Group.



**4. Describe the stressors and/or threats to the MSP species and their habitats in the project area that will be addressed through implementation of this project proposal.**

Currently, only a single BUOW breeding population in San Diego County remains, in an area on Otay Mesa that is slated for future development. In addition, the available habitat in Otay Mesa is only moderately suitable, due to heavy clay soils, habitat fragmentation, limited squirrel presence, and heavy reliance on artificial burrows. Ongoing development pressure and land use changes in the area also threaten this single remaining breeding population. While a plan to establish a network of Conserved Lands with connectivity and appropriate habitat for BUOW is in process on the Mesa, the need for additional breeding populations in other locations has been recognized and included in conservation planning.

One of the most significant obstacles to conducting translocations successfully is post-translocation dispersal away from the release site (Stamps and Swaisgood 2007; Batson et al. 2015). Long-distance movements following release have been shown to increase risk exposure and mortality rates (Stamps and Swaisgood 2007; Le Gouar et al. 2011; Shier and Swaisgood 2012). Temporarily holding relocated animals in acclimation enclosures at the release site may encourage individuals to remain in the vicinity upon release (Bright and Morris 1994; Batson et al. 2015), but this method alone does not always yield success (Shier and Swaisgood 2012). Thus, a major consideration is to find mechanisms to retain or “anchor” animals in suitable habitat at the release site.

The semi-colonial behavior of BUOW may play a role in limiting dispersal from the release site. The presence of established BUOW individuals sends a signal that the habitat is suitable for settlement. Without that minimum threshold density of established owls, released BUOW may be more likely to disperse from the release site. The management goal, then, is to maintain the presence of BUOW at a density high enough to encourage settlement by new individuals.

For many wildlife species, successful translocation is more likely with greater numbers of individuals released (Drake and Temple 2012, Popescu and Hunter 2012), and this general rule is likely to apply to a greater extent in semi-colonial species such as BUOW. Most BUOW active translocations currently include one or two pairs, so the initial translocation of 5 pairs supported by MAP meets a high threshold of best practice for this species. Even the best translocation efforts carry a degree of risk, though, with an expectation of higher mortality levels and dispersal in the first year. Ensuring a supply of additional birds through a conservation breeding program will minimize risk and support the persistence of the new breeding node.

**5. Describe the management techniques proposed, including whether they have been previously used successfully and where.**

Previous BUOW conservation breeding programs have shown that the species breeds readily in captivity, producing many young (Leupin and Low 2001). The current wild-caught pair will be held for up to 2 years. The wild pair and some progeny will be translocated and released at RJER. A common translocation method for BUOW is to relocate pairs just prior to the breeding season so that they lay eggs at the release site, and the eggs and chicks serve to anchor them at the release site. Additional BUOW may come from sources such as rehab centers or other zoological facilities, and will be managed in accordance with permits and IACUC protocols.

Previous BUOW breeding programs have also shown that released BUOW will settle, but that mortality from predation is high in the first month after release (Leupin and Low 2001). Supplemental releases will be conducted using the same techniques as the initial translocation. For BUOW soft-release methods such as adding a holding period of two weeks or more increase settlement, survival, and reproduction (Mitchell et al. 2011). ICR uses an acclimation period of 30 days in a hacking cage with provisioning. Longer holding periods are avoided to minimize long-term dependence or atrophy of flight muscles. After release, supplemental feeding through the breeding season may be used if needed to support juvenile survival. Predator avoidance training will be conducted to reduce risk to naïve individuals. The mix of owls in this project will provide opportunities for social learning and cultural transmission from wild owls to their progeny, enhancing the development of survival skills among owls from the breeding program. Every effort will be made to encourage settlement, survival, and reproduction by released BUOW.

Land Manager Grant funding will allow for selected progeny to be held back from the release and paired for additional rounds of breeding at the Safari Park and Living Coast Discovery Center from 2018-2021. Pairs will be selected to maintain genetic diversity, and additional owls will be taken in to maintain genetic integrity. All captures and releases of owls will undergo complete vetting as part of the CDFW and USFWS permissions processes. There are no negative anticipated effects to MSP and other sensitive species and their habitats resulting from this management activity.

**6. What strategic approach will be used to ensure the successful, long-term outcome of the proposed project?**

The opportunity to establish a BUOW breeding node at RJER comes from the fortuitous alignment of several factors: a source population of wild owls impacted by development, a funding source, high-quality habitat conditions at the receiver site, ongoing vegetation and squirrel management at the receiver site, and interagency support. ICR, MAP, and CDFW are already committed to the success of the initial translocation. The ICR conservation breeding program will strategically provide a contingency source of owls to support the persistence of the new node. LMG funding will extend the conservation breeding program, filling a critical funding gap in this significant and exciting new conservation project.

ICR is maintaining a long-term local commitment to this species. The tasks in this proposal would represent years 8-10 of our BUOW work in San Diego County. The San Diego Zoo also has a long history of conservation breeding and reintroduction expertise with avian species such as California condor (*Gymnogyps californianus*), Ridgway's rail (*Rallus obsoletus*), and puaiohi (*Myadestes palmeri*). Throughout our work with owls and squirrels, we have followed an adaptive management approach wherein the outcome of management actions is documented scientifically, and there is continuous feedback between science and management. Using this approach, each lesson learned is incorporated into the next steps for both research and management, enabling constant adaptive revision of methods while maintaining a focus on a few key overarching goals.

**7. What are the goals and objectives for the proposed project? What criteria/metrics will be used to measure success?**

The primary goal of this project is to support the establishment of the first recovery node for BUOW in San Diego County to help lower the risk of extirpation. Our project focuses on two main areas to achieve this goal: (1) extending conservation breeding; and (2) translocation of owls to RJER. The objective for the conservation breeding task is to conduct years 2-4 of a short-term breeding program at the San Diego Zoo Safari Park and Living Coast Discovery Center to provide a source of owls for supplemental translocations. Owl groups produced from this effort will be soft-released to RJER (and potentially to additional priority sites as identified by the interagency BUOW Partners Group). Success will be measured through established quantitative metrics of owl settlement, survival, and reproductive success gathered through post-release monitoring.

San Diego Zoo Global (SDZG) will be conducting most aspects of this project, with subcontractor support from Living Coast Discovery Center. SDZG, founded in 1916 as a private nonprofit corporation dedicated to the preservation and protection of animal and plant species, operates the San Diego Zoo, San Diego Zoo Safari Park and San Diego Zoo Institute for Conservation Research (ICR) which are renowned for their animal and plant collections and scientific research. Safari Park husbandry staff will be responsible for the daily care and breeding of BUOW, which will be overseen by Michael Mace, Director of Animal Collections and Strategy (previously Safari Park Curator of Birds). BUOW are already a part of the SDZG collections and have been successfully bred at the Safari Park.

Once 3 breeding pairs are established at the Safari Park, additional pairs will be bred at Living Coast Discovery Center. The Living Coast Discovery Center (LCDC) has collaborated with SDZG previously as a partner in the successful local conservation breeding effort for Ridgway's Rail. That project provides a template for our proposed BUOW collaboration. For BUOW, the two organizations have previously

worked collaboratively to trial new solar-powered satellite transmitters on BUOW. LCDC has provided BUOW husbandry since 1990, and breeding has successfully occurred in their exhibit space.

At LCDC, Lindsay Bradshaw (Animal Care Manager) oversees staff and manages program compliance. Beth Sabiston (Animal Care Coordinator) will oversee daily husbandry at LCDC.

Field monitoring data will be collected by ICR scientists and personnel who have years of experience with our ongoing BUOW research program. Drs. Lisa Nordstrom & Sarah Hennessy will provide oversight for project design and implementation; Dr. Sarah Hennessy will also act as project manager including data collection and analysis; and Colleen Wisinski will coordinate all field activities including targeted site preparation, BUOW translocations, and monitoring.

**8. How will the applicant manage the data collected?**

All data collected by Safari Park and LCDC husbandry staff will be managed by ICR Recovery Ecology staff. Data from monitoring released birds will be added to an existing database in Access. The data will be compiled and transferred to SANDAG by the Project Manager and Coordinator. All synthesized data will be formatted and submitted for entry into SC-MTX database. Quarterly and final reports will be prepared by the PIs and Project Manager. The SDZG Grants Administration team will prepare and submit financial reports and invoices.

**9. Has the proposed project received *TransNet* Environmental Mitigation Program (EMP) funds previously?**

This project has not previously been funded through the *TransNet* EMP.

**10. Is the proposed activity being done on land that was previously set aside as mitigation?**

Rancho Jamul Ecological Reserve is a closed ecological reserve managed for wildlife and habitat. Additional priority node areas may be identified by the interagency Partners Group in the future, including mitigation sites.

*References*

Batson, W.G., Gordon, I.J., Fletcher, D.B., and Manning, A.D. 2015. Translocation tactics: a framework to support the IUCN Guidelines for wildlife translocations and improve the quality of applied methods. *Journal of Applied Ecology* 52: 1598-1607.

Bright, P.W., and Morris, P.A. 1994. Animal translocation for conservation: performance of dormice in relation to release methods, origin and season. *Journal of Applied Ecology* 31: 699-708.

Drake, D., and Temple, S.A. 2012. Captive Propagation and Translocation. In *The Wildlife Techniques Manual Volume 2. Management*. Silvy, N., Ed. Johns Hopkins University Press, Baltimore, MD. Pp 293- 306.

Le Gouar, P., Mihoub, J.B., and Sarrazin, F. 2011. Dispersal and habitat selection: behavioural and spatial constraints for animal translocations. In: Ewen JG, Armstrong DP, Parker KA, Seddon P, editors. *Reintroduction biology: integrating science and management*. Blackwell Publishing, Oxford. pp. 138- 164.

Leupin, E.E., and Low, D.J. 2001. Burrowing Owl reintroduction efforts in the Thompson-Nicola region of British Columbia. *Journal of Raptor Research* 35: 392-398.

Lincer, J. L. and P. H. Bloom. 2007. The Status of the Burrowing Owl (*Athene cunicularia*) in San Diego County, California. In Proceedings of the California Burrowing Owl Symposium, J.H. Barclay, J.W. Hunting, J.L. Lincer, J. Linthicum, T.A. Roberts, Eds. p. 90-102. Bird Populations Monograph No. 1, Institute for Bird Populations and Albion Environmental, Inc., Point Reyes Station, CA.

Popescu, V.D. and Hunter Jr., M.L. 2012. Assisted Colonization of Wildlife Species at Risk from Climate Change. In Wildlife conservation in a changing climate. Brodie, J.F., E.S. Post, D.F. Doak, Eds. University of Chicago Press, Chicago, IL. pp. 347-368.

San Diego Management and Monitoring Program and The Nature Conservancy. 2017. Management and Monitoring Strategic Plan for Conserved Lands in Western San Diego County: A Strategic Habitat Conservation Roadmap. 3 Volumes. Prepared for San Diego Association of Governments. San Diego.

San Diego Zoo Institute for Conservation Research. 2017. Burrowing Owl Conservation and Management Plan for San Diego County. San Diego, CA: 86 pp.

Shier, D.M., and Swaisgood, R.R. 2012. Fitness Costs of Neighborhood Disruption in Translocations of a Solitary Mammal. *Conservation Biology* 26: 116-12

Stamps, J.A., and Swaisgood, R.R. 2007. Someplace like home: Experience, habitat selection and conservation biology. *Applied Animal Behaviour Science* 102: 392-409.

**B. Scope of Work by Task**

Please break down the proposal into discrete tasks and include a task name, description of each task, quantifiable expected results, and discrete deliverables for each task. *Note: make sure to list tasks for quarterly reporting on the status of the grant project and a final report on the outcome of the grant project. You may add or subtract rows as needed.*

**Exhibit A – Proposed Project Scope of Work**

Task No.	Task Name	Task Description	Quantifiable Results/Deliverables
1	Burrowing Owl Conservation Breeding and Release	Continuation of a short-term conservation breeding program for BUOW at the Safari Park. Breed at least 3 pairs of owls annually. Additional pairs may be housed at Living Coast Discovery Center. Owls produced from the conservation breeding effort will be soft-released in groups at RJER or other recovery node sites.	<ul style="list-style-type: none"> <li>• Production of burrowing owls for translocation</li> <li>• Health and husbandry care records</li> <li>• Protocols for BUOW conservation breeding and recommendations</li> <li>• Photos and/or video from nesting burrows</li> <li>• Supplemental translocation results</li> </ul>
2	Administrative	Project oversight, preparation and submission of quarterly reports and invoices, data analysis, and final report.	<ul style="list-style-type: none"> <li>• Quarterly reports</li> <li>• Final reports</li> <li>• Summarized data and photos</li> </ul>

**C. Budget by Task**

Please include a specific budget for each task described in the Scope of Work (Section B above). This should include both requested SANDAG funds and any matching funds proposed for each project year. *If matching funds are proposed, please distribute the match commitment proportionately<sup>2</sup>.* Applicants are encouraged to identify phasing in their proposal in case full funding for the project is not available. You may add or subtract rows and columns as needed. *This funding category is intended to fund restoration and enhancement projects taking place over a three- to five-year period and will not cover on-going annual costs within applicant's organization.*

**Exhibit B – Proposed Project Budget**

Task No.	Task Name	Year 1 Grant Request	Year 1 Matching Funds <sup>1</sup>	Year 2 Grant Request	Year 2 Matching Funds <sup>1</sup>	Year 3 Grant Request	Year 3 Matching Funds <sup>1</sup>	Total Grant Request	Total Matching Funds	Total Project Cost
1	<b>BUOW Conservation Breeding &amp; Release</b>	\$27,500		\$20,225	\$	\$20,457	\$	\$68,182		\$68,182
	Labor	7,500		7,725		7,957				
	Travel & Supplies	12,500		5000		5000				
	Subcontract for additional BUOW husbandry at LCDC	7500		7500		7500				
2	<b>Administrative</b>	1,500	1000	1500	1000	1500	1000	\$4,500	\$3,000	\$7,500
	Labor	1,500	1000	1500	1000	1500	1000			
	<b>Sub Total</b>	<b>\$29,000</b>	<b>\$1,000</b>	<b>\$21,725</b>	<b>\$1,000</b>	<b>\$21,957</b>	<b>\$1,000</b>	<b>\$72,682</b>	<b>\$3,000</b>	<b>\$75,682</b>
	<b>Indirect Cost (15%)</b>	<b>\$ 4,350</b>	<b>\$11,574</b>	<b>\$ 3,259</b>	<b>\$8,670</b>	<b>\$ 3,294</b>	<b>\$8,763</b>	<b>\$ 10,902</b>	<b>\$29,007</b>	
	<b>TOTAL</b>	<b>\$33,350</b>	<b>\$12,574</b>	<b>\$24,984</b>	<b>\$9,670</b>	<b>\$25,250</b>	<b>\$9,763</b>	<b>\$83,584</b>	<b>\$32,007</b>	<b>\$115,591</b>
	<b>PERCENTAGE</b>	<b>73%</b>	<b>27%</b>	<b>72%</b>	<b>28%</b>	<b>72%</b>	<b>28%</b>	<b>72%</b>	<b>28%</b>	<b>100%</b>

<sup>1</sup>

**D. Project Schedule**

Please include start and end dates relative to the anticipated Notice to Proceed (assumes Fall 2018) for each task described in the Scope of Work (Section B above). Please list tasks for quarterly reporting on the status of the grant project and a final report on the outcome of the grant project. You may add or subtract rows as needed.

**Exhibit C - Proposed Project Schedule**  
(Assumes Fall 2018 Notice to Proceed [NTP])

Task No.	Task Name	Proposed Start Date	Months Needed to Complete Task	Task End Date
1	<b>BUOW Conservation Breeding</b>	0-1 Months from NTP	35 Months	12/31/2021
2	Administrative	0-1 Months from NTP	36 Months	12/31/2021

Please explain why and how much additional time would be needed in the event of any delays due to NTP being provided beyond Fall 2018 and/or unexpected weather conditions such as drought that could occur during the proposed project implementation.

The breeding season for BUOW begins in February annually. If NTP is provided after the 2019 breeding season begins, we will not be able to add BUOW pairs to the program until Year 2 of the 3-year program.

This project should not be critically affected by drought or other unexpected weather conditions. The contingency plan is for supplemental feeding after release, to support the survival and breeding productivity of released BUOW.

**NOTICE REGARDING PREVAILING WAGES**

SANDAG’s EMP Land Management Grant Program projects are funded with *TransNet* revenues consistent with the *TransNet* Extension Ordinance adopted by the voters in November 2004 (SANDAG Ordinance 04-01). Although SANDAG Ordinance 04-01 does not require payment of prevailing wages, California law may require that public works projects pay prevailing wages for workers.

Applicant acknowledges that SANDAG has strongly encouraged Applicant to seek legal counsel regarding whether the Proposed Project will require applicant to pay prevailing wages and agrees that SANDAG will have no liability for conducting this analysis.  Yes  No

Applicant acknowledges that if awarded an EMP Land Management Grant, the grant agreement between SANDAG and the grantee requires grantee’s compliance with all federal, state and local laws and ordinances applicable to the Agreement.  Yes  No

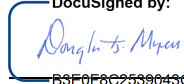
**REQUIRED STATEMENTS FROM APPLICANT**

- Yes  No The applicant has read and understands the Sample Grant Agreement (Agreement) and Invoice Template (Attachment 4).
- Yes  No If the SANDAG Board of Directors approves the proposed project proposal, the proposed applicant agrees to sign and return the Agreement to SANDAG, without exceptions or amendments, within 45 days of receipt.
- Yes  No The applicant agrees to comply with SANDAG’s Board Policy No. 035, Competitive Grant Program Procedures, which outlines “Use-it-or-lose-it” project milestone and completion deadlines. Board Policy No. 035 is included in the Agreement, and also is on SANDAG’s website at the following link: [sandag.org/organization/about/pubs/policy\\_035.pdf](http://sandag.org/organization/about/pubs/policy_035.pdf)
- Yes  No The applicant understands that 10 percent of all invoices will be retained until the completion of the proposed project.
- Yes  No The applicant understands that for proposed projects with matching funds, retention will be withheld beyond the 10 percent retention for each invoice submittal that does not meet the proportionate matching funds requirement. These additional matching funds will not be released until proportionate matching funds are reached for the project to-date.
- Yes  No The applicant understands that all invoices must be accompanied by written, documented support of the charges for requested reimbursement of grant funds and payment will not be made by SANDAG until all documents are satisfactorily submitted.
- Yes  No The applicant understands that invoices and reports must be submitted on a quarterly basis within three weeks after the period covering January 1 to March 31; within three weeks after the period covering April 1 to June 30; within three weeks after the period covering July 1 to September 30; and within three weeks after the period covering October 1 to December 31.
- Yes  No The applicant understands that the EMP quarterly report template (to be sent to the grantee after NTP is issued) must be used to document quarterly progress and that invoices with errors will be returned to the grantee for correction prior to being processed by SANDAG staff.
- Yes  No The applicant understands that the final invoice must be accompanied by written, documented support of the charges for requested reimbursement of grant funds; a final report (prepared in accordance with the final report template to be sent to grantee after NTP is issued); and all outstanding deliverables in order to receive final payment and have retained funds released.
- Yes  No The applicant understands that to be considered eligible for funding, a resolution complying with the requirements of Board Policy No. 035, Section 4.1, must be submitted to SANDAG at least *two weeks* prior to the recommendation by the Regional Planning Committee of the list of prioritized project proposals. SANDAG will provide applicants with advance notice of the Regional Planning Committee’s anticipated meeting date.
- Yes  No The applicant agrees to submit all project data/information to SANDAG in a format compatible with the regional management database.

**I have the authorization to submit this proposal (Grant Application Form and required supplementary materials) on behalf of my organization.**

Douglas G. Myers President/CEO

**Applicant Name/Title** (print or type)

DocuSigned by:  
  
B3E0F8C2538043C...

**Applicant Signature**

1/12/2018  
mm/dd/yyyy

**Date**